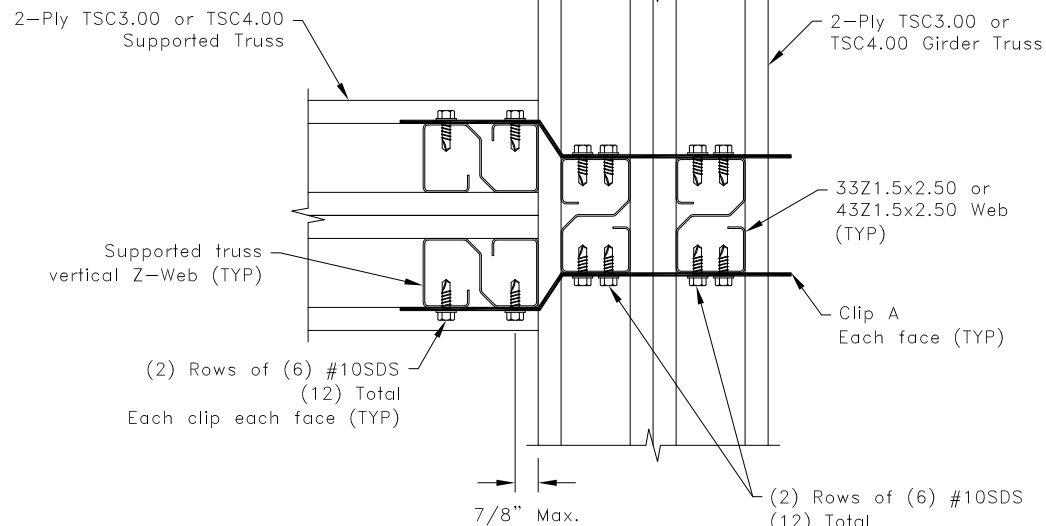
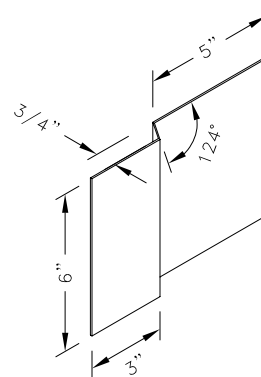


3-D View

$R_v = R_{v1} + R_{v2}$
$U = U_1 + U_2$
$R_v = U = 10,000\#$



Plan View



Clip A

14g ASTM A653 SS Grade 33 Class 1 G60
Minimum bare metal thickness: $t = 0.0677"$

General Notes:

1. SDS = Self-Drilling Tapping Screw
2. Screw end distance and edge distance is $9/32"$ minimum. Screw spacing is $9/16"$ minimum.
3. Supported truss must be analyzed with clip type bearings located as shown.
4. R_v refers to vertical reaction and U refers to uplift.
5. Cold-Formed Steel Calculations are per the 2010 addendum to the AISI 2007 "North American Specifications for the Design of Cold-Formed Steel Structural Members" (S100-07/S2-10).

TrusSteel®

www.TrusSteel.com

Florida: 2400 Lake Orange Drive, Suite 150 / Orlando, FL 32837 / (800) 755-6001
Missouri: 13389 Lakefront Drive / Earth City, MO 63045 / (800) 326-4102

90° Truss-to-Truss Connection (Z-Webs)

ITW Building Components Group, Inc. shall not be responsible for any performance failure in a connection due to a deviation from this detail. Any variation from this detail shall be approved in advance by ITW Building Components Group, Inc.

Custom Detail:

CD130509

Date:

05/10/13

Custom Detail Category:

Truss-to-Truss Connection